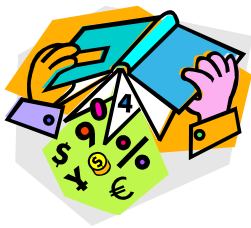


We will continue to learn in our reading and writing groups to get even better at using phonics.

Our talk for writing focus will be on learning and adapting a non-fiction text to make our own instructions about **how to be a fossil detective***.

We will be using the library to research facts.



In Maths we will be using place value to understand about 2 digit numbers.

We will investigate $\frac{1}{2}$ and $\frac{1}{4}$ of objects, shapes and amounts. We will also tell the time using o'clock and half past. We will be learning +/- facts up to 20.

In RE we will be reading stories about Jesus' adult life and how Jesus had an affect on others lives.



In music we will be learning about composing, following and recording a simple score.



Our PSE focus will be on 'Caring for myself' this includes identifying feelings and why routines like toilet flushing and Hand washing are important.



In Geography we will be **using maps to help us in the forest.*** We will draw simple maps of the classrooms and will begin to use the 4 compass points to describe where things are located.



In computing we will be learning about recording using the record, stop and play buttons on I-Pads and talking clipboards.



In Science we will be **finding out and looking at deciduous and evergreen trees***. Also discovering what different animals eat.



Year 1 will be learning this half term through the topic

Dinosaurumpus

The planning for our dinosaur topic will be led by and responding to the children's interests.



Our alien focus will be learning about how Super TW can help make us better learners. There will be lots of opportunities to work with partners and within teams. This will also help us on our Forest Mornings

Our PE focus will be on dinosaur inspired dances and developing our ball skills.



Our Learning power alien Super TW will be helping us to make our teamwork even better!

In Art and DT we will learn how to use modrock to make a sculpture, collage to add texture and investigating a variety of levers, slides and pivots.



In history we will be learning about the life and work of Mary Anning-the famous fossil finder.

* Spiritual, moral, social and cultural development

* Covered in our forest learning